



TrailManor™

WORLD'S LIGHTEST, EASIEST TOWING TRAVEL TRAILERS



2012 DIGITAL CATALOG



*Go wherever you want,
whenever you want.*

*It only takes one extra gallon of
gas to tow a TrailManor 100 miles.*



A Smarter Way of Thinking About Travel Trailers

By Being Truly Lightweight, TrailManor Changes Everything.

Imagine a travel trailer that offers all the room you need, but can still be easily towed with a properly equipped minivan, crossover, or SUV.

That's the idea behind TrailManor, a unique travel trailer that's specially designed to provide the easy towing of a tent camper along with the luxury and comfort of a traditional travel trailer.

TrailManor offers a hardwall, lightweight trailer that folds down easily, but sets up in a matter of minutes, without cranking or wrestling with wet canvas. Today, this idea is recognized as one of the most innovative trailers available in the industry.

The first TrailManor was built 30 years ago, but now, the TrailManor concept makes more sense than ever. As gas prices rise, more consumers are drawn to the economy of light tow vehicles. Most people are not willing to buy an additional tow vehicle just to pull a heavy fifth wheel or conventional trailer.

And with TrailManor, you don't have to. TrailManor's trailers can be towed with many of the most popular vehicles on the road today. (To see if your vehicle can tow a TrailManor, see our tow ratings page at www.trailmanor.com.)





*Inside, there's remarkable
comfort, luxury, and style.*



Amenities you'd never expect to find in a folding lightweight trailer.





Setup takes less than two minutes.



It's as easy as opening a car trunk.

Why TrailManors Are Different

If you compare TrailManor to other travel trailers, they are half the weight. The weight reduction is the result of innovative engineering using aircraft technology and materials. And because they also fold down, TrailManor trailers tow easily, with low drag for great fuel economy.

Walls are made from light insulating polystyrene foam sandwiched between aluminum for exceptional strength. There is no particleboard or chipboard anywhere in the trailer.

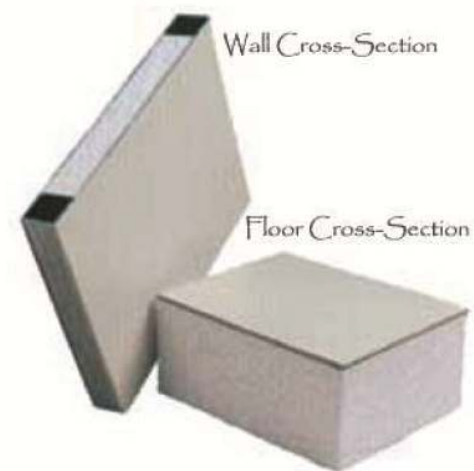
Floors and even countertops are also foam filled, which costs more to build but greatly reduces towing weight. TrailManor uses computer design to locate the axle position so that trailer sway is avoided. The axles are placed farther back to eliminate any tendency for the trailer to sway. In fact, many TrailManor owners say their trailers tow even better than their tent campers did.

Remarkable Comfort And Style

The fresh new colors are comfortable, warm and inviting. Beds are permanent and out of the way of the living space. Counter space is plentiful, even on smaller models. And dining tables are spacious and easily stored for travel. Most models also feature a hardwall bathroom—very unique for a folding trailer—complete with shower and tub. Slide Out models feature electric slide operation for easy setup.

The new TrailManors are really something to see. This year's models feature upscale sofas in colors that are designed to be fashionable—and stay in style for years.. Rich cherry cabinets, polished pewter hardware and tile-look floors lend an open airy feel.

And options include electric tongue jacks, a satellite dish, solar panel and alloy wheels.









A Perfect Fit

Easy towing. Easy setup. The easy way to travel and camp. With TrailManor, your vacation starts the moment you leave home, because even towing is effortless and relaxing.

And once you arrive—whether it's for a weekend or extended stay—you have the comfort and luxury to make your adventure memorable and enjoyable.

TrailManors range in price from \$17,000 to \$32,000. The laminated construction and lift system cost more to make than conventional travel trailers, but they pay off by providing the easiest towing and lightest weight travel trailers on the market—the only travel trailer that tows like a pop-up.

If you have questions about tow vehicles, pricing or availability, contact your nearest TrailManor dealer or visit www.trailmanor.com.

See for yourself. For camping, TrailManor is the best idea that's popped up in years.





New! 2417 Sport

All New—The Sport Series

Let us introduce you to the newest--and smallest--and lightest--TrailManors, the TrailManor Sport line.

These new TrailManors are designed for pure, easy-camping fun. They're light enough to be towed with smaller vehicles, offer great towing fuel economy, and set up in virtually no time.

And you'll be surprised at how affordable they are--and how much more they offer than tent campers in the same price range.

The TrailManor 2417 Sport features the classic folding TrailManor design. It has a king sized bed on one end; a double bed on the other, so there's plenty of room for family. It also features a full kitchen with sink, 3-way refrigerator, and an innovative portable stove that can be used either inside the trailer or outside if you want to enjoy the outdoors. The 2417 also has a cassette toilet option.



The TrailManor 19 RD SportDeck is built on the same frame as the 2619, so it has exceptional strength. We've also enhanced the value of the model with more standard equipment, including twin gas bottles, Fantastic vent, and a slick new European style sink and two-burner stove. Then we added 15 inch tires and alloy wheels, a coated back deck, sturdy new folding steps, and a convenient outside shower. It even features a hardwall bathroom and our popular dinette floorplan.



The new **TrailManor 16 RD SportDeck** is the lightest TrailManor yet. Its compact design makes towing behind smaller vehicles simple and stress-free. And it still offers plenty in the way of amenities.

There's a two-burner stove, sink, and refrigerator. You can even add a bathroom option, or opt for more counter and storage space. The dinette floorplan offers room for relaxing and meals, and it is an ideal choice for couples who love camp at a moment's notice.



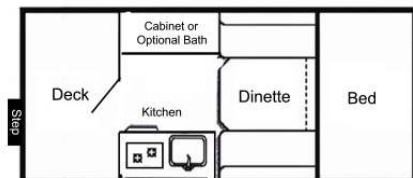
New! 19 SportDeck

A Floorplan To Fit You

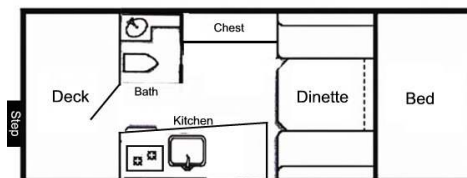
TrailManors range in size from 16 feet to 31 feet. Our floorplans were created with lots of owner input, making them versatile, functional, and very enjoyable.

Sport Series

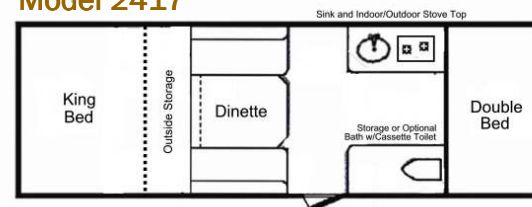
Model 16 RD



Model 19 RD

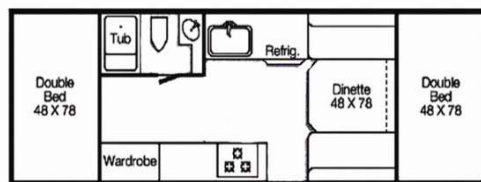


Model 2417

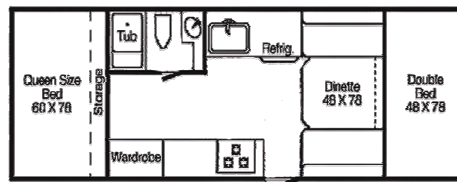


Classic Series

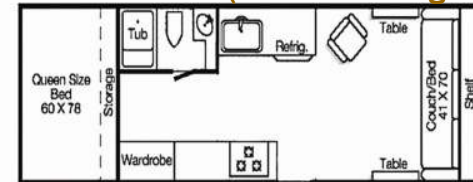
Model 2619



Model 2720



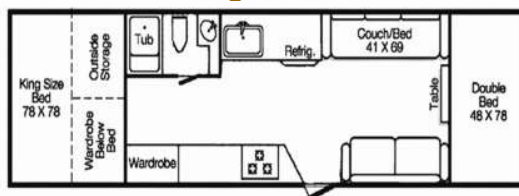
Model 2720SL (Slide Out Living Room)



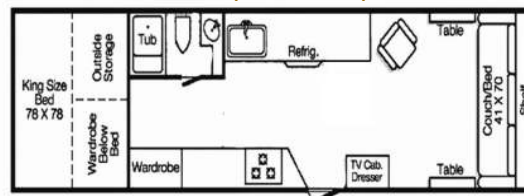
Model 2720 SD (Slideout Dinette)



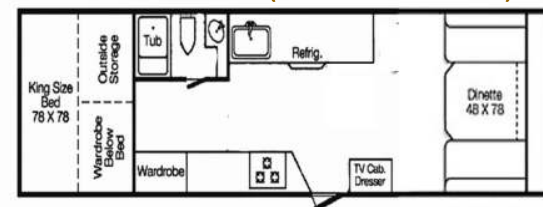
Model 3124 King Bed



Model 3124KS (Slide Out)



Model 3124KD (Slide Out Dinette)



Specifications

Model	16RD	19RD	2417	2619	2720	2720SL	2720SD	3124KB	3124KS	3124KD
Equivalent Trailer Size Open	16'	19'	24'	26'	27'	27'	27'	31'	31'	31'
Towing Length Closed	16' 3"	19' 3"	17' 9"	19' 3"	20' 3"	20' 3"	20' 3"	24' 3"	24' 3"	24' 3"
Body Length – Open	16' 3"	19' 3"	21' 6"	24' 4"	24' 4"	24' 4"	24' 4"	28' 4"	28' 4"	28' 4"
Outside Height – Closed	67.25"	67.25"	67.25"	67.25"	67.25"	67.25"	67.25"	65.5"	65.5"	65.5"
Outside Height – Open	101.5"	101.5"	101.5"	101.5"	101.5"	101.5"	101.5"	102.5"	102.5"	102.5"
Outside Width	6'9"	7'7"	7'1"	7'7"	7'7"	7'7"	7'7"	7'7"	7'7"	7'7"
Interior Headroom	6'4"	6'4"	6'4"	6'4"	6'4"	6'4"	6'4"	6'4"	6'4"	6'4"
Sleeping Capacity	2	2	4	6	6	4	4	6	4	4
Approx. Dry Weight (lbs)	1720	2140	2150	2673	2742	2865	2865	3090	3185	3185
Approx. Tongue Weight (lbs)	190	280	295	351	346	392	392	448	490	490
Approx. Load Capacity (lbs)	1350	1350	1350	1350	1333	1210	1210	1595	1227	1227
Tires	13"	15"	13"	15"	15"	15"	15"	15"	15"	15"

TrailManor reserves the right to change specifications, equipment and color schemes or discontinue models without notice or obligation.

Features

- Rubber torsion axles with independent suspension
- Bearing lubrication system
- 2" x 5" steel frame
- 3" laminated floor
- Metal underbelly
- Krystal Kote exterior
- Electric brakes
- Fire extinguisher
- 12-v electrical w/55 amp power converter/battery charger
- 110 volt outside receptacle
- Ground fault interrupter
- 12-volt demand water system
- City water hookup
- 20-gallon freshwater tank (11.5 gal. on Model 16RD)
- 30-gallon gray water tank (13 gallon on 16RD and 2417)
- Recirculating toilet (N/A 16RD;Cassette toilet option for 2417)
- Power bath vent (N/A 16RD)
- 2 burner stove (Sport Series)
- 3 burner stove w/oven (Classic Series)
- Norcold 3-way 3 cu. ft. refrigerator (1.7 cu. ft. 16RD and 2417)

- Roof vents with 12-volt lights
- TV/cable outlet
- Twin 20 lb. gas bottles with automatic changeover (1 bottle on Models 16RD and 2417)
- LED running lights
- Marble look countertops
- Outside patio light
- Fantastic Vent ceiling fan (N/A 16RD, Optional 2417)
- Stabilizer jacks
- Suburban 20,000 BTU furnace (Optional 2417)
- Radial tires
- 6-gallon DSI gas/electric water heater (4-gallon on 16RD and 2417)
- Bedroom privacy curtain
- Black frame dark tint windows
- Spare tire package
- Outside shower (Optional on 16RD,19RD, and 2417)
- Park cable hookup (Optional on 16RD and 2417)
- Monitor panel
- Smoke detector, CO & LP gas detector
- Preinstalled wiring for radio/stereo
- Electric front slide out (Slide out models Only)

Options

- Roof air conditioner
- Awning
- Electric tongue jack
- Swing around tongue, reducing storage length by 2 ft.
- Hanging kitchen cabinets (N/A 16RD)
- Microwave (N/A for Sport Series)
- Plumb w/quick connect for outside grill
- Alloy wheels (excludes spare) (N/A on 16RD and 2417)
- Rear bike receiver
- 80 watt solar panel with digital control
- Power lift/level jacks with remote
- Stove cover (N/A 16RD and 2417)
- Hanging LCD TV mount
- Front window w/curtains & stone guard
- Jack HD TV antenna with booster
- 40 gallon fresh water tank (2619, 2720, 3124KB only)
- Dual propane tanks (16RD and 2417)



General Offices: P.O. Box 397, Hartington, NE 68739
Mfg. Plants: 1202 McGhee Lane (Coming 2012) an additional
Jacksboro, TN 37757 manufacturing facility in
423.563.6685 Hartington, NE