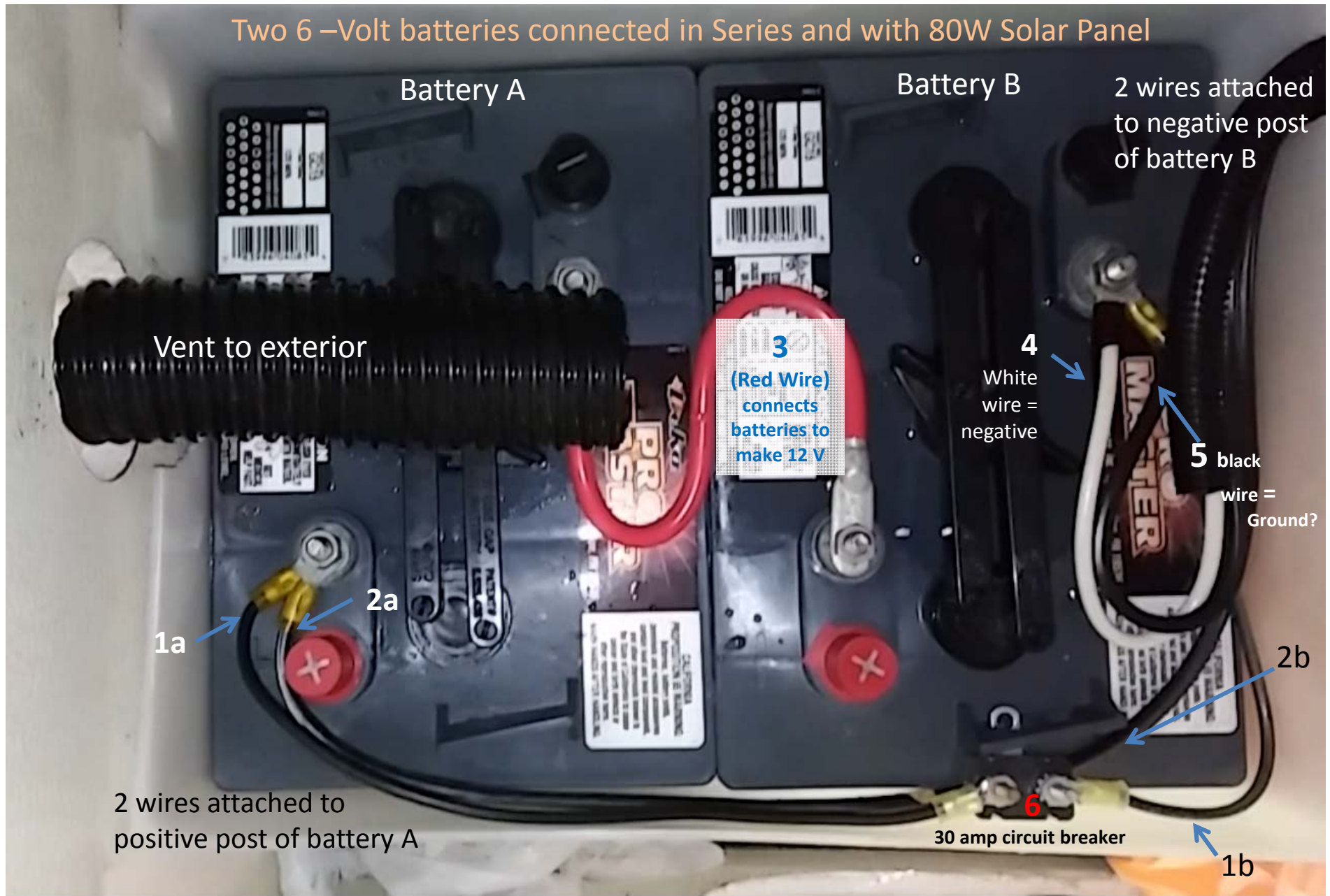


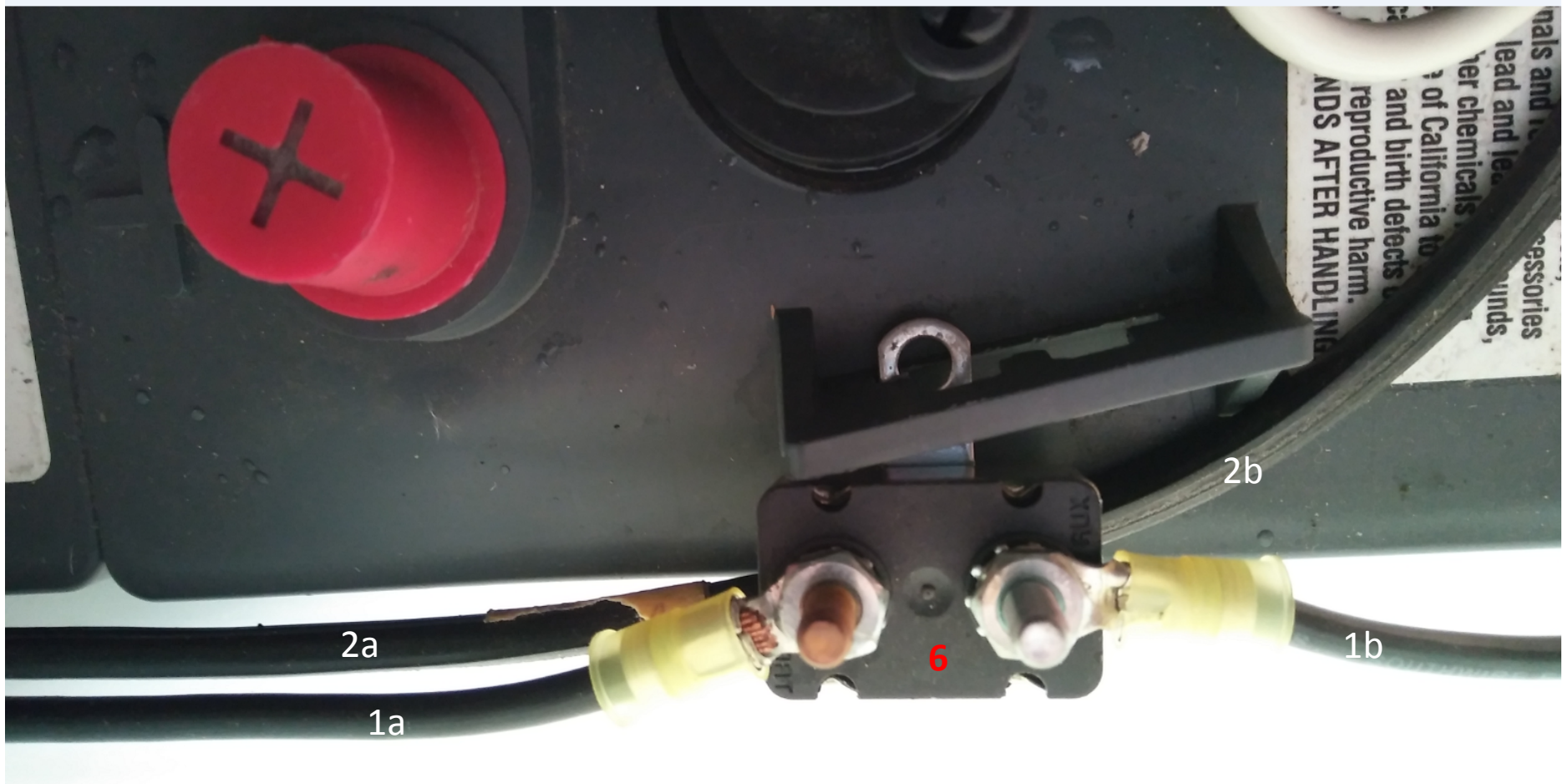
## Two 6-Volt batteries connected in Series and with 80W Solar Panel



### Why 2 positive wires?

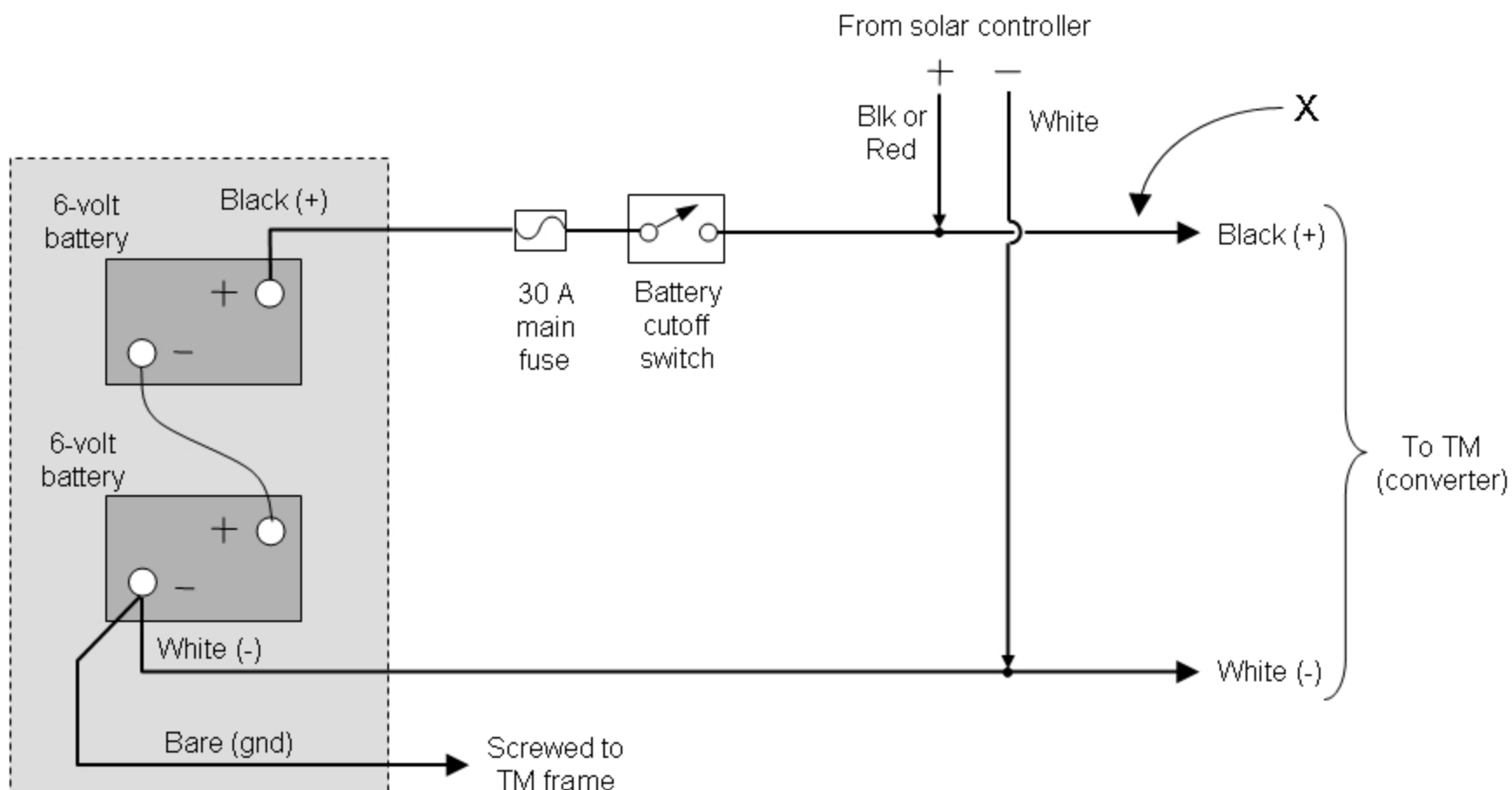
Bill's diagram shows only 1, and my wires attached to negative post match Bill's diagram. So why do I have an extra positive wire?

## CLOSE UP VIEW



### 6. Is this the fuse?

No – it's a 30 amp circuit breaker. Possibly self re-setting. Many set ups will have a 30 amp fuse here. The circuit breaker is better.



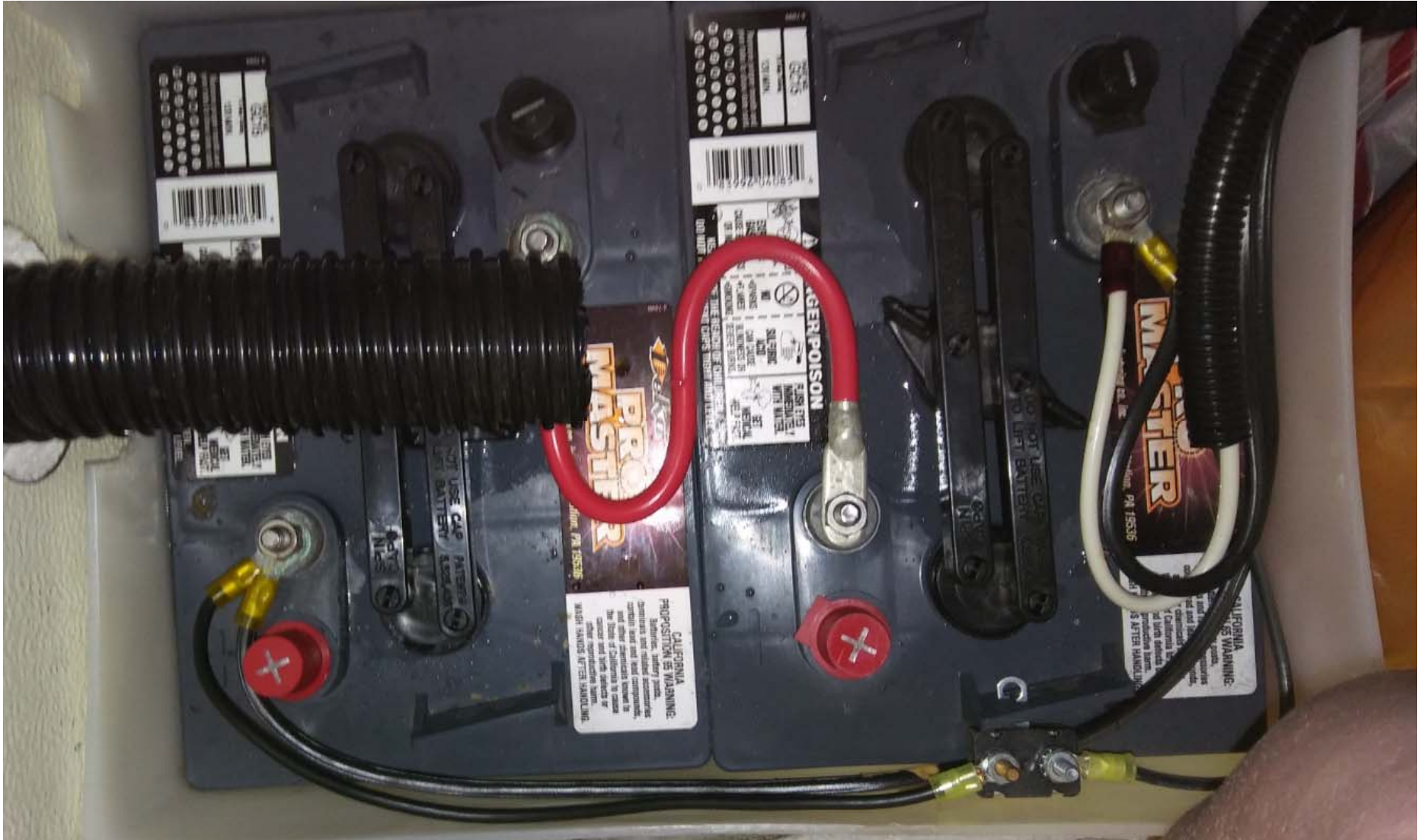
If the battery cutoff switch is installed in the location shown, then the switch cuts off all loads and chargers from the battery.

If the switch is located at the "X", then the battery is disconnected from all loads and chargers except the solar power system. In this case, the solar system can keep the battery charged even when the cutoff switch is OFF.

An electric tongue jack has its own fuse, so it can be connected directly to the battery, or after the cutoff switch.



## Clear image of battery setup.



When I zoom in the picture, it appears that positive wire 1b and the white #4 negative wire are enclosed by the plastic tubing. It appears that the positive wire 2b and the black # 5 negative wire are outside of that tube. I don't know if that matters at all. Unfortunately I do not have a picture of where the wires go.