



Model 3326 King



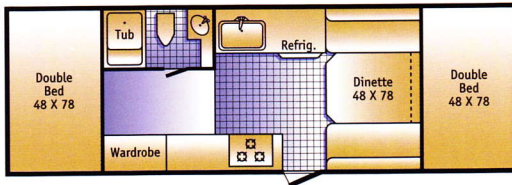
Model 2720SD

A Floor Plan To Fit You.

TrailManor Trailers range in size from 26 feet (19 feet closed) to 33 feet (26 feet closed). Our floorplans were created with lots of owner input and ideas, making them versatile, functional, and very enjoyable.

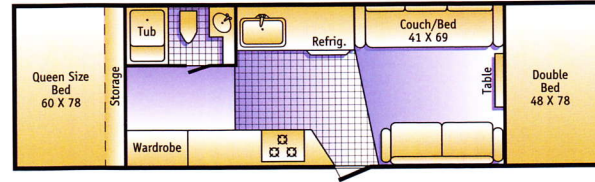
Model 2619

Our smallest TrailManor offers a lot of luxury and fun. It sleeps six and fits easily into a garage.



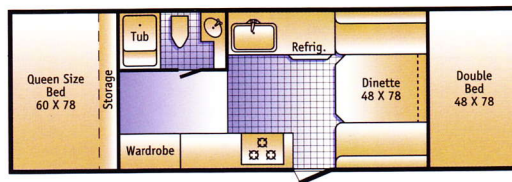
Model 3023

The 3023 has a comfortable living area with 2 sofas. Our most popular model.



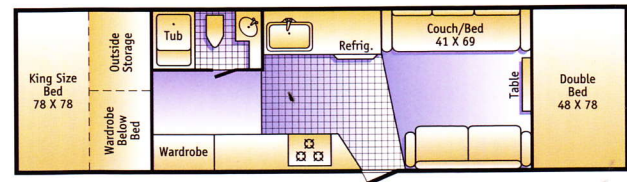
Model 2720

The Model 2720 has a queen-size bed with 17 cubic feet of storage below.



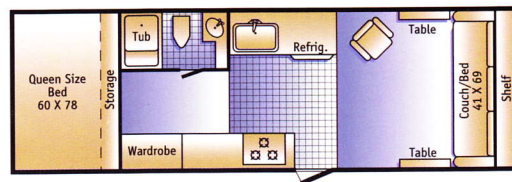
Model 3124KB

King-bed models feature a 42-cubic foot trunk with an extra wardrobe under the bed.



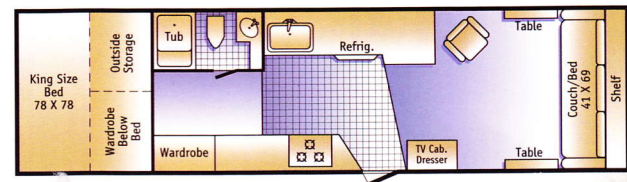
Model 2720SL

If you don't need 2 permanent beds, the front slide-out models give you a larger living area.



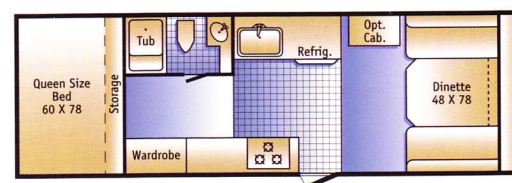
Model 3124KS

In addition to the 3124KB features, the 3124KS has a longer kitchen countertop, an extra 3-drawer dresser, and a front slide-out living room.



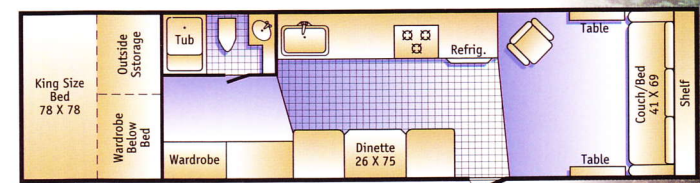
Model 2720SD

This 2720SD model offers a large dinette area.



Model 3326 KING

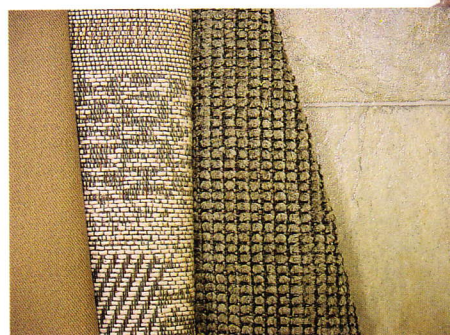
Our largest TrailManor weighs only 3520 lbs. and features tandem axles, a king-size bed, and a side dinette in the kitchen.



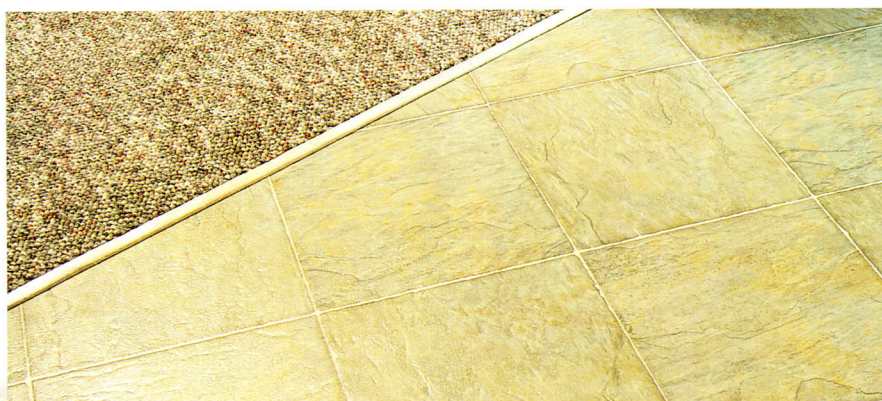
Interior Selections To Complement Your Lifestyle.



Slate



Birch



Slate vinyl flooring and rich Berber carpeting in dark tones for carefree camping.



BETTER VALUE. FOR A BETT



We looked at everything to make sure we were building the strongest, lightest trailer available. The reliable TrailManor lift system has never failed to open. It is maintenance free and comes with a limited lifetime warranty.

TrailManor is designed to be so water-tight that you can even open and close it in the rain without water getting inside. An internal gutter is built into the seven inch roof overlap to channel water away.

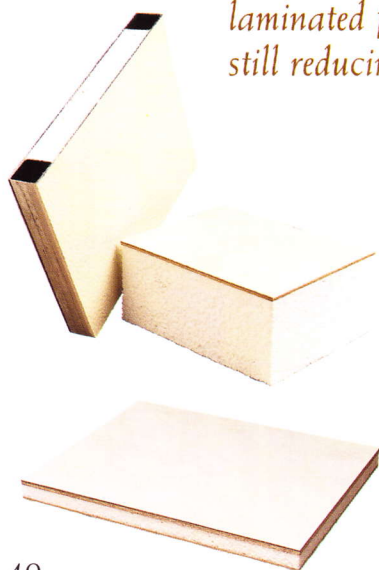
Rubber torsion axles with independent suspension and radial tires give TrailManor its smooth, trouble-free ride.

Grease fittings are built into the hubs for easy maintenance. And low point drains allow do-it-yourself winterizing without antifreeze.

TrailManors range in price from \$20,000 to \$31,000. The laminated construction and the lift system make these more expensive than conventional travel trailers. But TrailManors are the lightest weight and easiest towing trailers on the market. In fact, we build the only travel trailer that tows like a pop-up.

Innovative Panel Construction

Key structural components in every TrailManor are built using a special laminated panel construction process that adds tremendous strength while still reducing weight.



TrailManor walls and roof are built using a special laminated construction of polystyrene insulation with aluminum on both sides. Our special lightweight walls are better insulated than conventional travel trailers. It's more expensive to build a trailer this way, but it cuts hundreds of pounds from the overall weight, making towing easier.

Our 3" floors feature a special laminated construction that is stronger, more durable, lighter, and better insulated than other trailer floors made from particle board or plywood. That helps keep the weight of the whole trailer low for easy towing, yet gives you a floor you can count on. And our insulation means you stay more comfortable year-round, and use less energy to do it.

Even our countertops are specially built to save weight without compromising strength. TrailManor's lightweight laminated countertops cost more to build but are only half the weight of particle board. Typical trailer countertops are made of heavy particle board that can swell with moisture. We don't use particle board or chipboard anywhere in the trailer.

TER CAMPING EXPERIENCE.



Low Point Drains
Do-it-yourself winterizing without antifreeze.

Standard Scissor Jacks
Four standard scissor jacks make leveling simple and fast.



Outside Shower



Qestpex™ Pipe System
Stands up to freezing better than other tubing, a big advantage over conventional PVC used in other trailers.



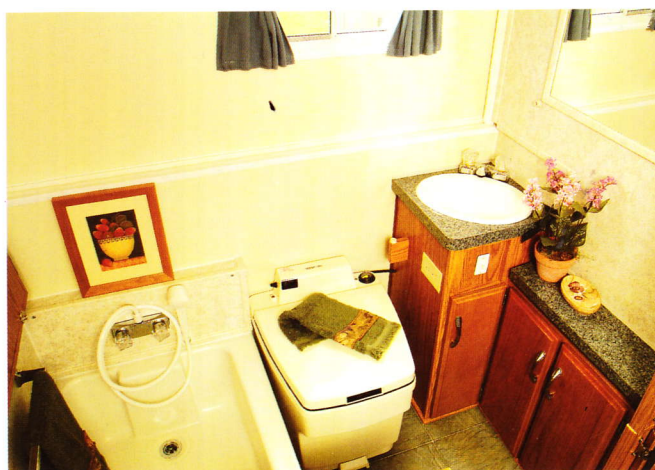
Awning
Optional crank out awning opens and closes simply and quickly.



Entrance door dead-bolt lock



Phone Jack & Park Cable Hook-up



Standard Hardwall Bathroom with Tub and Shower
Commercial airliners use electric recirculating toilets to save weight. So does TrailManor. Our toilet uses less water so there's more available for showers. And you can camp for days without having to dump the sewer tank.

An All-New Manufacturing Facility. And You're Invited.

TrailManor Trailers are built in an all-new facility in Lake City, Tennessee, about 25 minutes north of Knoxville. We cordially invite you to tour our facility and see the care and innovation that goes into every TrailManor. Tours are held Monday through Friday from 9:30 to 11 am and 1 to 3 pm. Eastern Time. For directions, call (865) 426-7426. For more information on TrailManor visit our website at www.trailmanor.com





Standard Features and Specifications in your TrailManor.

- Rubber torsion axles with independent suspension
- Radial tires
- Bearing lubrication system
- 2" x 5" steel frame
- 3" laminated floor
- Metal underbelly
- Krystal Kote® exterior
- Safety chains
- 2" coupler
- 10" electric brakes on all wheels
- Breakaway switch
- Double entrance step
- 4 scissor jacks
- Fire extinguisher
- 12 volt electrical system with 30 amp power converter & battery charger
- 110 volt outside receptacle
- Ground fault interrupter
- Porch light
- 25 ft., 30 amp power cord
- 12 volt demand water system
- City water hook-up
- 20 gallon fresh water tank
- 30 gallon grey water tank
- Thetford® 12 volt recirculating toilet
- Drain hose carrier bumper
- Automatic ignition gas/electric water heater
- Hardwall bathroom with tub
- Outside shower
- Power bath vent
- Fluorescent bathroom lighting
- Front bed privacy curtains
- Rear privacy curtain
- 3-way refrigerator
- Suburban® 3-burner range with oven
- Suburban® 16,000 BTU automatic ignition furnace
- Front window awning
- Rear window awning
- Twin 20-lb. gas bottles with automatic changeover
- Radius windows with safety glass
- Roof vent with 12-volt lights
- High volume roof exhaust fan
- Monitor panel
- Smoke detector
- LP gas detector
- Deluxe interior fabrics
- Oak cabinet doors
- Spare tire & carrier
- Radio ready with speakers & antenna
- Phone jack
- Park cable hook-up
- Entrance door dead-bolt lock
- Limited lifetime warranty on torsion bars

SPECIFICATIONS	Model 2619	Model 2720	Model 2720SL	Model 2720SD	Model 3023	Model 3124KB	Model 3124KS	Model 3326 King
Equivalent Travel Trailer Size – Open	26'	27'	27'	27'	30'	31'	31'	33'
Towing Length – Closed	19'3"	20'3"	20'3"	20'3"	22'9"	24'3"	24'3"	26'3"
Body Length – Open	22'11"	23'11"	23'11"	23'11"	26'5"	27'11"	27'11"	29'11"
Outside Height – Closed ¹	64 1/2"	64 1/2"	64 1/2"	64 1/2"	65 1/2"	65 1/2"	65 1/2"	64 1/2"
Outside Height – Open ¹	101 1/2"	101 1/2"	101 1/2"	101 1/2"	102 1/2"	102 1/2"	102 1/2"	101 1/2"
Outside Width ²	7'7"	7'7"	7'7"	7'7"	7'7"	7'7"	7'7"	7'7"
Interior Headroom	6'4"	6'4"	6'4"	6'4"	6'4"	6'4"	6'4"	6'4"
Sleeping Capacity	6	6	4	4	6	6	4	5
Approx. Dry Weight (lbs)	2673	2742	2865	2865	2915	3090	3185	3520
Approx. Tongue Weight (lbs)	351	346	392	392	409	448	490	486
Approx. Load Capacity (lbs)	1350	1333	1210	1210	1923	1595	1227	1396
Tires	14"	14"	14"	14"	15"	15"	15"	14"
Axles	1	1	1	1	1	1	1	2

TrailManor reserves the right to change specifications, equipment and color schemes or discontinue models at any time without notice or obligation.

¹Outside Height - Add 6" for roof vent, 16 1/2" for std. roof air or 14 1/4" for low profile roof air. ²Outside Width: Add 5" for awning and clearance lights.

For further information and prices, see:



THE TRAVEL TRAILER THAT TOWS LIKE A POP-UP

Since 1983

P.O. Box 130 • Lake City, TN 37769 • 865-426-7426

www.trailmanor.com

